

reportFile

Author: Joe Miller Jr.

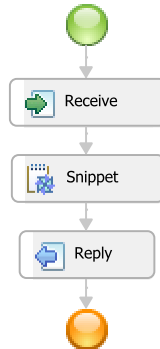
Date: Dec 1, 2008

Table of contents

1 Business Process "HelloWorldProcess".....	4
1.1 Overview.....	4
1.2 Namespaces.....	4
1.3 Process Settings.....	4
1.4 Interface Partners.....	5
1.5 Variables.....	5
1.6 Activities.....	5
1.6.1 Receive Activity "Receive".....	5
1.6.2 Snippet Activity "Snippet".....	5
1.6.3 Reply Activity "Reply".....	5
2 Cross Reference.....	7
3 Documentation generation settings.....	8

1 Business Process "HelloWorldProcess"

1.1 Overview



1.2 Namespaces

Prefix	URI
bpws	http://schemas.xmlsoap.org/ws/2004/03/business-process/
ns	http://HelloWorld/bpc/samples/HelloWorldProcessArtifacts
ns0	http://HelloWorld/bpc/samples/HelloWorldProcessInterface
wpc	http://www.ibm.com/xmlns/prod/websphere/business-process/6.0.0/
xsd	http://www.w3.org/2001/XMLSchema

1.3 Process Settings

General Settings

Display Name: HelloWorldProcess
 Name: HelloWorldProcess
 Namespace: http://HelloWorld/bpc/samples

Details

Bind the life cycle to the invoking business process: no
 Continue on error: no
 Delete automatically: On successful completion
 Execution mode: microflow
 Expression language: Java
 (http://www.ibm.com/xmlns/prod/websphere/business-process/expression-lang/java/6.0.0/)
 Query language: XPath1.0 (http://www.w3.org/TR/1999/REC-xpath-19991116)
 Valid from: 2008-12-01T14:36:12

Join Behavior

Suppress join failure: yes

Imports

Location: HelloWorldProcess.wsdl
 Namespace: http://HelloWorld/bpc/samples/HelloWorldProcessInterface
 Import type: http://schemas.xmlsoap.org/wsdl/

Location: HelloWorldProcessArtifacts.wsdl
 Namespace: http://HelloWorld/bpc/samples/HelloWorldProcessArtifacts
 Import type: http://schemas.xmlsoap.org/wsdl/

1.4 Interface Partners

Name	Type
HelloWorldProcess	ns0:HelloWorldProcess

1.5 Variables

Name	Type	Business relevant
input1	xsd:string	

Variable "input1"

Variable Type: Data type variable
Data Type: xsd:string

1.6 Activities

1.6.1 Receive Activity "Receive"

Name: Receive
Display name: Receive

Details

Create a new process instance: yes
Partner: HelloWorldProcess
Interface: ns0:HelloWorldProcess
Operation: operation1

Data type variable mapping for input(s):

Name	Type	Variable
input1	string	input1

1.6.2 Snippet Activity "Snippet"

Name: Snippet
Display name: Snippet

Details

```
//print the greeting:
System.out.println("Hello, " + input1);
//assign a value to the Output variable:
input1 = "Hello World!";
```

Server

Continue on error: same as process

1.6.3 Reply Activity "Reply"

Name: Reply
Display name: Reply

Details

Partner: HelloWorldProcess
Interface: ns0:HelloWorldProcess
Operation: operation1

Data type variable mapping for output(s):

Name	Type	Variable
output1	string	input1

2 Cross Reference

The lists in this section show how resources are related to one another.

References list

HelloWorldProcess.bpel (HelloWorldProcess) references

- \HelloWorld\bpcl\samples\HelloWorldProcess.wsdl (HelloWorldProcess)

Referenced by list

\HelloWorld\bpcl\samples\HelloWorldProcess.wsdl (HelloWorldProcess) is referenced by

- HelloWorldProcess.bpel (HelloWorldProcess)

3 Documentation generation settings

General settings

Title:	reportFile
Author:	Joe Miller Jr.
Date:	Dec 1, 2008
TOC nesting level:	7

Utilized documentation units

HelloWorldProcess.bpel (HelloWorldProcess)

Documentation unit:	Business Process Documentation Unit
Documentation type:	detailed