

Lenovo Switch Center™

Release Notes

Version 8.1

Lenovo™

Note: Before using this information and the product it supports, read the general information in the *Safety information and Environmental Notices and User Guide* documents on the *Lenovo Documentation CD* and the *Warranty Information* document that comes with the product.

Fifth Edition (July 2018)

© Copyright Lenovo 2018
Portions © Copyright IBM Corporation 2014.

LIMITED AND RESTRICTED RIGHTS NOTICE: If data or software is delivered pursuant a General Services Administration "GSA" contract, use, reproduction, or disclosure is subject to restrictions set forth in Contract No. GS-35F-05925.

Lenovo and the Lenovo logo are trademarks of Lenovo in the United States, other countries, or both.

Release Notes

Lenovo Switch Center is a web-based client/server application that is designed to manage Lenovo and IBM BladeCenter, Pureflex, and RackSwitch ethernet and converged switches. You can point and click to administer and monitor switches in a single-blade chassis, multiple-blade chassis, or large multi-rack deployments.

These release notes provide the latest information regarding Lenovo Switch Center 8.1. This supplement modifies and extends the documentation for use with the *Lenovo Switch Center User Guide*.

Please keep these release notes with your product manuals.

Installing Lenovo Switch Center

This section describes system requirements, prerequisites and related information.

System requirements

Before you install Lenovo Switch Center, make sure that your computer meets the requirements described in [Table 1](#).

Table 1. *Switch Center System Requirements*

| | |
|------------------|---|
| Operating System | Windows Server 2008/2012 SUSE Linux Enterprise Server 10/11 on Intel x86 32-bit and 64-bit servers Redhat Enterprise Linux 6.1/6.2 on Intel x86 32-bit and 64-bit servers |
| System Memory | 1 GB Minimum |
| Hard Drive Space | 800 MB during installation |

Windows Operating System

Lenovo Switch Center requires the exclusive use of port 162 and 514 for SNMP trap and Syslog messages. Before you start the Switch Center service, you must stop the SNMP Trap Service or any service that uses port 162 or 514. Complete the following steps to stop the SNMP Trap Service.

1. Click **Start > Control Panel > Administrative Tools > Services**.
2. Click **SNMP Trap Service**.
3. Click **Stop the service**.

To check whether port 162 or 514 is in use, issue the following command:

```
# netstat -an -p UDP
```

Linux Operating System

Lenovo Switch Center requires the exclusive use of port 162 and 514 for SNMP trap and Syslog messages. Before you start the Switch Center service, you must stop any service that uses port 162 or 514. To check whether port 162 or port 514 is in use on Linux, issue the following commands:

```
# lsof -i :162  
# lsof -i :514
```

Notes:

- The `lsof` command is found in the following directory: `/usr/bin` or `/usr/sbin`

- If you are installing the evaluation version of the product, there is a dependency on the following compatibility standard C++ library:

`compat-libstdc++-33-3.2.3-69.el6.i686.rpm`

Please install this rpm prior to installing Switch Center.

Browser requirements

The Lenovo Switch Center component is a web-based application. You can log in to the application from any system that supports the following browser versions:

- Microsoft Internet Explorer Version 8.x, 9.x, and 11.x
- Mozilla Firefox Version 10.x and 17.x
- Google Chrome Version 31

You must enable JavaScript on each browser. If you are launching Lenovo Switch Center after upgrading the older version, it is recommended to clear the web browser's Cookies, Temporary Internet Files, History and Form data.

Flash Player requirement: Lenovo Switch Center uses Flash-based charts for rendering performance charts and health status gauges. In order to ensure they are displayed correctly, you must have Flash Player installed in the browser that you use to launch the Lenovo Switch Center user interface. You can install the Flash Player from <http://get.adobe.com/flashplayer/>

Enabling JavaScript in Microsoft Internet Explorer

1. Open Microsoft Internet Explorer.
2. Click **Tools > Internet Options**.
3. Click **Security**.
4. Click the Internet icon.
5. Click **Custom Level**.
6. Scroll to Scripting.
7. Click **Enable Active Scripting**.
8. Click **OK**.

Enabling JavaScript in Mozilla Firefox

1. Open Mozilla Firefox.
2. Click **Tools > Options**.
3. Click **Content**.
4. Click **Enable JavaScript**.
5. Click **OK**.

URL change if upgrading from Switch Center 7.1.1

The URL for the Switch Center GUI has changed from the version 7.1.1 URL.

The new URL is: `http://<hostname>:40080/snsc`

Switch configuration requirements

Be sure that each switch that you plan to manage meets the following requirements.

- Ensure that SNMP access is enabled on the switch. See the *Command Reference* for your switch to get information about how to enable SNMP access.
- Ensure that the switch is physically connected to the network.
- Ensure that the switch is turned on and receiving power.
- Ensure that the switch has a correct IP address.
- Ensure that the switch is not blocking access from the client IP address.
- Be sure that you can successfully ping the switch.
- If you want to use automatic discovery, you must configure the switches with either SNMPv1 or SNMPv2c authentication. Automatic discovery does not support switches that use SNMPv3 authentication.
- If you plan to use the manual discovery feature, you can configure the switch with SNMPv1, SNMPv2c or SNMPv3 authentication.

Port requirements

Lenovo Switch Center uses the following HTTP, HTTPS, and RMI service ports. Ensure that no other applications use the ports, or configure the application to use different ports.

- Port 40080 for HTTP
- Port 40443 for HTTPs
- Port 40999 for RMI Service

Switch Support

The following list contains the names of all of the switch types supported by this version of Switch Center. Switch Center does not support switch types or versions that are not listed.

You can also click **Help > About** in the Switch Center GUI to view the list of supported switches.

General Support

The following switches are supported:

- Lenovo Flex System SI4091 10Gb System Interconnect Module
- IBM BladeCenter Layer 2-7 Gigabit Ethernet Switch Module
- IBM RackSwitch G8000
- IBM RackSwitch G8052
- IBM RackSwitch G8100
- IBM RackSwitch G8124
- IBM RackSwitch G8124E
- IBM RackSwitch G8264
- IBM RackSwitch G8264CS
- IBM RackSwitch G8264CS Flex System Interconnect Fabric
- IBM RackSwitch G8264T
- IBM RackSwitch G8332
- IBM Flex System Fabric CN4093 10Gb Converged Scalable Switch
- IBM Flex System Fabric EN4093 10Gb Scalable Switch
- IBM Flex System Fabric EN4093R 10Gb Scalable Switch
- IBM Flex System EN2092 1Gb Scalable Switch
- IBM Flex System Fabric SI4093 System Interconnect Module
- IBM Distributed Virtual Switch 5000V v 1.0
- Lenovo RackSwitch G8272 v 8.2.2+
- Lenovo RackSwitch G8296
- Lenovo RackSwitch G7028 8.4+
- Lenovo RackSwitch G7052 8.4+

Configuration Support

- Lenovo Flex System SI4091 10Gb System Interconnect Module 8.2
- IBM RackSwitch G8000 v 5.1, 5.2, 6.3, 6.5, 6.7, 6.8
- IBM RackSwitch G8052 v 6.3, 6.6, 6.7, 6.8, 6.9, 7.2, 7.4, 7.7, 7.8, 7.9
- IBM RackSwitch G8124 v 5.0, 5.2, 6.3, 6.5, 6.6, 6.7, 6.8, 7.2, 7.4, 7.7, 7.8, 7.9

- IBM Rackswitch G8124E v 6.3, 6.5, 6.6, 6.7, 6.8, 7.2, 7.4, 7.7, 7.8, 7.9
- IBM RackSwitch G8264 v 6.4, 6.5, 6.6, 6.7, 6.8, 6.9, 7.2, 7.4, 7.7, 7.8, 7.9
- IBM RackSwitch G8264CS 7.1, 7.7, 7.8
- IBM RackSwitch G8264CS Flex System Interconnect Fabric v 7.8
- IBM RackSwitch G8264T v 6.8, 7.7, 7.8, 7.9
- IBM RackSwitch G8316 v 6.8, 7.4, 7.7, 7.8, 7.9
- IBM Flex System Fabric CN4093 10Gb Converged Scalable Switch v 7.5, 7.7, 7.8
- IBM Flex System Fabric EN4093 10Gb Scalable Switch v 6.8, 7.2, 7.5, 7.7, 7.8
- IBM Flex System Fabric EN4093R 10Gb Scalable Switch v 7.5, 7.7, 7.8
- IBM Flex System EN2092 1Gb Scalable Switch v 6.8, 7.2, 7.5, 7.7, 7.8
- IBM Flex System Fabric SI4093 System Interconnect Module 7.7, 7.8
- IBM BladeCenter Virtual Fabric 10Gb ESM v 5.0, 6.1 (premium), 6.3, 6.5, 6.7, 6.8, 6.9, 7.2, 7.4, 7.7, 7.8
- IBM BladeCenter 1/10Gb Uplink ESM v 1.0, 5.1 (premium), 6.1 (premium), 6.3, 6.5, 6.7, 6.8, 7.2, 7.4
- IBM BladeCenter Layer 2-3 Gigabit ESM v 1.5, 5.1 (premium), 5.2
- IBM Distributed Virtual Switch 5000V v 1.0
- Lenovo RackSwitch G8272 v 8.2.2+
- Lenovo RackSwitch G8296
- Lenovo RackSwitch G7028 8.4+
- Lenovo RackSwitch G7052 8.4+

VMready Across the DataCenter Wizard Support

- IBM RackSwitch G8000 v 6.3, 6.5, 6.7, 6.8
- IBM RackSwitch G8052 v 6.3, 6.6, 6.7, 6.8, 6.9, 7.2, 7.4, 7.7, 7.8, 7.9
- IBM RackSwitch G8124 v 6.3, 6.5, 6.6, 6.7, 6.8, 7.2, 7.4, 7.7, 7.9
- IBM Rackswitch G8124E v 6.3, 6.5, 6.6, 6.7, 6.8, 7.2, 7.4, 7.7, 7.9
- IBM RackSwitch G8264 v 6.4, 6.5, 6.6, 6.7, 6.8, 6.9, 7.2, 7.4, 7.7, 7.8, 7.9
- IBM RackSwitch G8264CS 7.1, 7.7, 7.8
- IBM RackSwitch G8264CS Flex System Interconnect Fabric v 7.8
- IBM RackSwitch G8264T v 6.8, 7.7, 7.8, 7.9
- IBM RackSwitch G8316 v 6.8, 7.4, 7.7, 7.8, 7.9
- IBM Flex System Fabric CN4093 10Gb Converged Scalable Switch v 7.5, 7.7, 7.8
- IBM Flex System Fabric EN4093 10Gb Scalable Switch v 6.8, 7.2, 7.5, 7.7, 7.8
- IBM Flex System Fabric EN4093R 10Gb Scalable Switch v 7.5, 7.7, 7.8
- IBM Flex System EN2092 1Gb Scalable Switch v 6.8, 7.2, 7.5, 7.7, 7.8

- IBM BladeCenter Virtual Fabric 10Gb Ethernet Switch Module v 6.3, 6.5, 6.7, 6.8, 6.9, 7.2, 7.4, 7.7, 7.8
- IBM BladeCenter 1/10Gb Uplink Ethernet Switch Module v 6.3, 6.5, 6.7, 6.8, 7.2, 7.4

VSI DB (802.1Qbg) support

- IBM BladeCenter Virtual Fabric 10Gb Ethernet Switch Module v 6.9, 7.2, 7.4, 7.7, 7.8
- IBM RackSwitch G8264 v 6.9, 7.2, 7.4, 7.7, 7.8, 7.9
- IBM RackSwitch G8264CS 7.7, 7.8, 7.9
- IBM RackSwitch G8264T 7.7, 7.8, 7.9
- IBM Flex System Fabric CN4093 10Gb Converged Scalable Switch v 7.7, 7.8
- IBM Flex System Fabric EN4093 10Gb Scalable Switch v 7.7, 7.8
- IBM Flex System Fabric EN4093R 10Gb Scalable Switch v 7.7, 7.8
- Lenovo RackSwitch G8272 v 8.2.2+
- Lenovo RackSwitch G8296

Changes in this Release

This release of Lenovo Switch Center contains the following changes:

- Fixes for the following security vulnerabilities:
 - CVE-2018-2579
 - CVE-2018-2588
 - CVE-2018-2603
 - CVE-2018-2663
 - CVE-2018-2795
 - CVE-2018-2796
 - CVE-2018-2799
 - CVE-2018-2800
 - CVE-2018-2815

Supplemental Information

This section provides additional information about configuring and operating Lenovo Switch Center.

Generating SSL certificate for HTTPS access to VMware vCenter as the VM Management Server

Configuring the connection information to the VM Management Server (VMware vCenter) can be done in two ways:

- Under the menu: **Options -> VM Management Server Connector**
- Within the **VMready Across the Datacenter Wizard**

To generate the SSL Certificate for access to the vCenter server, follow these procedures:

1. Browse the IP address of vCenter. For example:

`https://<IP Address of vCenter>`

The browser will issue a warning about website's security certificate.

2. Continue to this website. The browser will generate a certificate for this website.
3. Within the browser, view the certificate and export it to a file on your local system.

Specify this local file as the SSL Certificate in the dialog box when configuring the VM Management Server.

Windows Default installation location

By default, Lenovo Switch Center is installed (new installation; no upgrade) under the following path:

`%PROGRAMFILES%\IBM\SNSC`

Linux Default installation location

On Linux, Lenovo Switch Center is installed (new installation; no upgrade) under the following path:

`/opt/ibm/SNSC`

Windows Start/Stop/Check Script Locations

The administrator can start, stop and check the services using the following steps:

- To start Lenovo Switch Center, choose menu **Start > Programs > IBM > Lenovo Switch Center > Start Services**.
- To stop Lenovo Switch Center, choose menu **Start > Programs > IBM > Lenovo Switch Center > Stop Services**.
- To check the running status of Lenovo Switch Center, choose menu **Start > Programs > IBM > Lenovo Switch Center > Check Services**.

Linux Start/Stop/Check Script Locations

You can start, stop, and check the services on Linux using the following steps (as the root user):

- To start Lenovo Switch Center, issue the following command:
`/opt/ibm/SNSC/bin/startup.sh`
- To stop Lenovo Switch Center, issue the following command:
`/opt/ibm/SNSC/bin/shutdown.sh`
- To check the running status of Lenovo Switch Center, issue the following command:
`/opt/ibm/SNSC/bin/check.sh`

Switch Support Limits

Switch Center can manage more than 1000 switches if the system on which Switch Center is installed is configured with at least 2GB of RAM.

VMready Across the Datacenter Wizard Limits

There are limits to the number of virtual machines that can be pre-configured on each switch type. These are hard limits that are imposed by the switches. If you attempt to configure more than the limit, the switch will return an error.

Limits:

- IBM RackSwitch G8000: 1024 VMs
- IBM RackSwitch G8124: 2048 VMs with the restriction that it supports up to 512 VMs in untagged VM groups.
- IBM 10-port 10Gb Ethernet Switch Module: 2048 VMs
- IBM 1/10Gb Uplink Ethernet Switch Module: 1024 VMs

Note that if you are configuring different types of switches with the VMready Across the Datacenter Wizard, the limit of the total number of VMs that can be pre-configured is determined by the switch type with the lowest limit.

VMready Across the Datacenter Wizard – Sync Wizard Configuration

You can use this feature to refresh the source location of the configured Virtual Machines in the VMready wizard configuration file. This feature is useful, for example, if the source location of the configured Virtual Machine is moved from one Hypervisor to another. During the operation, the configuration file is updated and the changes are logged in the log file (<INST DIR>/logs/vmrad/default). After completing the sync operation, the summary table is also refreshed.

Note that when Virtual Machines are learned by more than one switch, the source location is not changed. However, the corresponding information is logged in the log file. Note also that when a switch is deleted, the Virtual Machines associated with that switch are not deleted.

VMready Across the Datacenter Wizard – Clear Wizard Configuration

You can use this feature to clear the deployed VMready configuration data from the switches, Hypervisors, and Switch Center.

Note that the deployed VMready configuration is cleared from Switch Center, irrespective of whether the clear operation succeeds or fails on switches and Hypervisors.

Known Issues

This section describes known issues in Lenovo Switch Center component.

Can't add an Switch Center instance in Switch Center MoM (when server is multi-homed)

The Manager of Manager function of Switch Center is not supported on servers that are multi-homed. (ID: LV300690)

Error on switch console when using a Switch Center VSI DB with more than 47 VSI type IDs

On some QBG-enabled switches that are using Switch Center as the VSI database, the switch reports an error on the console (and sends a syslog) as follows: NOTICE vm: VSIDB: Update failed as connection to VSI Manager via MGT port failed. (ID: XB290710 and LV302099)

G8264CS System Interconnect Fabric - Fabric Map Launching

When launching the Fabric Map feature located in the Device Console for the G8264CS System Interconnect Fabric device you may be prompted for a set of credentials. The credentials are: username: admin; password: admin. These credentials are not related to the Switch Center main login credentials and can not be changed by the Switch Center administrator.

Extra login screen displayed prior to display of fabric map

When launching the Fabric Map feature located in the Device Console for the G8264CS System Interconnect Fabric device you may be prompted for a set of credentials. The credentials are: username: admin; password: admin. These credentials are not related to the SNSC main login credentials and cannot be changed by the Switch Center administrator.. (ID: XB272849)

Port selection option for LACP tabs varies

When connected to the Master unit of a Flex System Interconnect Fabric stack in Switch Center and select **Device Console > Monitor > Layer 2**. In the **LACP** tabs, the **Port selection** option at the bottom of the page sometimes does not work. (ID: XB219357)

VM Management server configuration is not saved

When you go to the datacenter wizard, you can select switches and configure a VM Management server. When you test the connection, it succeeds, but when you save it and close, the connection no longer exists. (ID: XB264745)

Incorrect broadcast address of RackSwitch G8332 appears

The broadcast address of RackSwitch G8332 is displayed as "1" instead of the broadcast address of the selected interface. (ID: XB265108)

Switches discovered with strict mode is disabled are not displayed in the Device list page after strict mode is enabled

When a switch is discovered with SNMP v1/v2, strict mode disabled, and strict mode is enabled and Switch Center is restarted, the switches discovered when strict mode was disabled do not appear on the Device List page. The switch appears in the Summary page, but cannot be viewed. (ID: XB266037)

LLDP Port Configuration Export option uses wrong port number

On the tab:

Device Console > Configure > LLDP > LLDP Port

The **Export** option uses the system port number used in SNMP instead of the switch port number. (ID: XB267139)

No pending changes shown after adding Virtual LANs to CIST Bridge

When you use **Device Console > Configure > Layer2 > CIST > CIST Bridge** to add Virtual LANs to the CIST bridge and click Submit, the command **Device Console > Action > Diff Config**, does not show any pending changes. (ID: XB269723)

Wrong port number displayed in the port filter configuration

The command **Device Console Configure > Layer3 > IGMP > Filter Ports** displays the internal system port value instead of the actual port number used for configuring the filter. (ID: XB269772)

Information not showing in the CEE-DCBX Tab

The command **Device Console > Configure > CEE > DCBX** does not show any information. (ID: XB270495)

Invalid message displayed when enabling Local MACs with VMReady feature disabled

In a RackSwitch G8316 setup, the command **Device Console > Configure > Virtualization > Vmready > OUI MAC** displays a message when enabling Local MACs with VMReady feature disabled that does not match the message displayed in the ISCLI. (ID: XB270757)

The CEE PFC and PFC Status tab values do not match with those from the ISCLI

In a RackSwitch G8332 setup, the commands:

Device Console > Configure > CEE > PFC
Device Console > Configure > CEE > PFC Status

show values different from those seen on the ISCLI. (ID: XB271110)

The Switch Number field name on the MP CPU Statistics tab is incorrect

On the **Device Console > Monitor > Switch > MP CPU Statistics** tab, the name of the field that displays the “Configured Switch Number” is incorrectly displayed as “Switch Number”. (ID: XB274244)

The Export option does not generate a readable file for VMReady Misc Tab

The **Device Console > Configure > VMready > Misc** tab Export option generates an Excel file where the VENDOR name is listed in the same column as OUI MAC. (ID: XB274779)

IP Interface Statistics Counters are not incremented

The **Monitor > Layer3 > IP > IP interface Statistics Counters** do not get incremented. (ID: XB274826)

An irrelevant error message is displayed when enabling IGMP Fast Leave for an unsupported VLAN

The **Device Console > Configure > Layer 3 > IGMP > Advanced** tab displays the error message “Fast Leave VLANs: Undo failed” when you try to enable IGMP Fast Leave for an unsupported VLAN. (ID: XB274840)

Interface Statistics values differ from those in the ISCLI

When the switch is reset to factory default and traffic is sent on any newly created interface, the **Device Console > Monitor > Ports > Interface statistics** tab values do not match those on the ISCLI. (ID: XB275054)

Syslogs: Cannot configure logging for 'netconf'

The command **Device Console > Configure > Switch > Syslog Settings** does not provide an option to enable or disable logging for “netconf”.

Workaround: Use the ISCLI on the target switch. (ID: XB276066)

Cannot change BGP groups

The command **Device Console > Configure > Layer 3 > BGP > Group** throws an error message and does not let you create, modify, or delete any BGP groups. (ID: XB275067)

Cannot reset the Unicast Bandwidth setting

When the default value of the unicast bandwidth is “0”, when you set it to a value between 10 and 90, you cannot reset it to default value because “0” is not in the allowed range (10-90).

Workaround: Use the ISCLI on the target switch. (ID: XB275078)

Dial Home - No email for “ValidLogout” trap

When you configure Dial Home to receive email for traps, no email is received for the trap “ValidLogout”, but the traps are displayed in the **Reports > Event List** tab. (ID: XB275578)

OSPF General statistics counters values differ from those on the ISCLI

The command **Device Console > Monitor > Layer3 > OSPF > General Statistics** displays values different from those seen for the same counters on the ISCLI. (ID: XB275737)

Port changes for local domain not applied

When port changes are made and applied for a local domain via the command **Device Console > Configure > SPAR > Local Domains**, the changes do not appear in the Configure section for the local domain. (ID: XB276405)

File not found, error message seen on the help page for FC/FCOE ZoneSet member

When you try to view the help page for the command:

Device Console > Configure > FC/FCoE > Zoning > ZoneSet member

A 404 error appears.

Workaround: Use the URL:

http:<SNSC>/jsp/includes/help/cfg_fcoe_zoneset_2.html

Replacing “<SNSC>” with the host and port of your SNSC installation. (ID: XB281059)

Cannot remove EVB profile from vPort

When you set an EVP profile value for a vPort to its default value of “0” using the command:

Device Console > Configure > Virtualization > UFP > Virtual Ports

You cannot remove the EVB profile from the vPort.

Workaround: Use the ISCLI on the target switch. (ID: XB281308)

Sync Config restrictions

The following restrictions apply to the Sync Config feature:

- You can only copy data to and from switches that have a health status of Up.
- You can only use the Sync Config feature if previously-made configuration changes are saved to switch flash. (This statement replaces the second restriction listed in the manual, in the following section: **Performing Device-Specific Actions > Synchronizing the Configuration - Sync Config**).

SNMPv3 Traps

SNMPv3 Traps are not supported.

HP 10Gb Ethernet BL-c Switch configuration

Config Sync operation does not work between firmware versions 5.0 and 5.1. The working combination is 5.0 to 5.0, or 5.1 to 5.1

Configuration script mismatch between Menus and ISCLI

Issue: If you use Lenovo Switch Center to push a configuration script to a switch, the switch might report a successful update, even though the script was not interpreted correctly. The problem occurs when the switch is set to use one command-line interface (menus or ISCLI) and the configuration script is written for the other interface. The switch generates a syslog error when this condition is detected.

Solution: Make sure that the configuration script matches the CLI mode in which the switch is operating.

A menu-based script should be sent when the CLI boot mode is set to `ibmnos - cli` or if the user chose `ibmnos - cli` when prompted for the CLI mode when logging in via telnet/ssh.

An ISCLI script should be sent when the CLI boot mode is set to `iscli` or if the user chose `iscli` when prompted for the CLI mode when logging in via telnet/ssh.

Unsupported operations for Layer 2/3 GbESM with SmartConnect

The following operations are not supported in Lenovo Switch Center when you administer the Layer 2/3 GbESM with SmartConnect, because it has limited SNMP functionality.

Device Menu:

- Sync Config

Actions Menu:

- Apply
- Save
- Diff Config
- Diff Flash
- Config Dump

- Reboot Switch
- Syslog Dump
- Revert
- Revert Apply

Switch version report and device list:

- Save Pending
- Config For Next Reset
- Rack/Chassis
- Module Bay
- Manufacture Date
- Image 1 / 2 Software Version

Device Console > Monitor pages:

- Summary > Information
- Summary > Events
- Summary > Syslog

Note: Version 40.0.3.100 is not supported.

Incomplete configuration script might erase some of the current configuration

Issue: If you use Lenovo Switch Center to push a partial configuration script to a switch, the switch may erase those configurations that are not present in the partial configuration script.

Solution: Download the current configuration and then add the new configuration parameters to the script file that you downloaded.

Showing a device as a BNT device

Lenovo Switch Center displays a device as a Blade Network Technologies (BNT) device only when it cannot completely retrieve the switch parameters. This is rare, but can happen when MIB variables are not implemented by an SNMP agent.

Unresponsive script warning message in Mozilla browser family

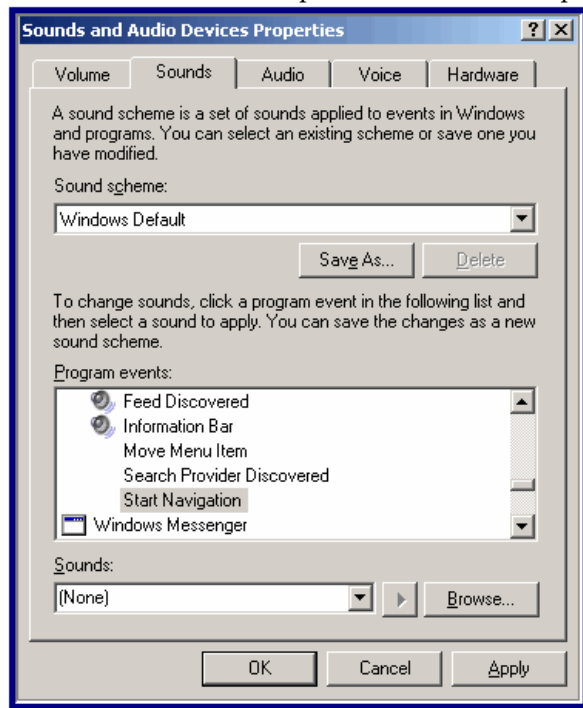
The browser might display a warning message that includes a reference to Unresponsive script. This might occur if there are too many rows in a table and you attempt to add or remove columns. If you see this message, click **Continue** to complete your task.

Deactivating clicking sound in Internet Explorer browser

Issue: Internet Explorer generates a clicking sound when you manually or automatically refresh a Lenovo Switch Center Web page. To turn off or suppress the clicking sound, complete the following steps on the computer that you use to access Lenovo Switch Center.

1. Click **Start**.
2. Click **Control Panel > Sounds and Audio Devices**.
3. Click **Sounds**.
4. Scroll to the **Windows Explorer** section of the Program events list.
5. Click **Start Navigation**.
6. Select **(None)** from the Sounds list (see [Figure 2](#)). **Tip:** Do not change the Sound scheme setting.
7. Click **Apply**.
8. Click **OK**.

Figure 1. Sounds and Audio Devices Properties Window Example



Printing

When printing from Lenovo Switch Center, the output might be split horizontally across multiple pages.

Traps and Syslogs

Before you install Lenovo Switch Center component, check to see if any other applications bind to Trap (default 162) and Syslog (default 514) ports. If another application binds to those ports, Lenovo Switch Center cannot receive traps and syslog messages.

Stacking release for RackSwitch G8000 v6.0

This version of the G8000 is not supported.

Printing ACLs and VMAPs

Printing ACLs and VMAPs from the Configuration windows results in truncation of some of the fields of the ACL/VMAP.

Resizing the Device Console window in Firefox Browsers

Resizing the Health Status page of a device can take 10-12 seconds to complete.

VMready Across the Datacenter: Cannot add VMs discovered on non-server (external or uplink) ports

VMready switches running firmware version 6.3.x.x or below do not allow adding VMs that are discovered on non-server ports (external or uplink ports).

VM Data Center Report for RackSwitch G8000 (Stacked) may not be complete

RackSwitch G8000 configured in stacked mode running on firmware version 6.3 or below may not return the complete VM Data Center Report information due to a timeout issue with the SNMP agent running on that switch.

VMware vSphere client plug-in does not launch to Switch Center UI because IP Address of Switch Center server has changed

If the IP address of the server on which Lenovo Switch Center is installed changes, you must re-register the plug-in with each VM Management server that Switch Center is registered as a plug-in. Otherwise the vSphere Client plug-in will attempt to the launch to Switch Center using the previous IP address.

VMready VM Report > VM Groups – Report may contain multiple entries for a Virtual Machine

A virtual machine may be reported on multiple switches in this report if a VMotion has recently occurred. This is due to the fact that VMready switches retain indefinitely the port where a VM was learned even when the VM has moved to different switch.

FDB information

If there are more than 8000 FDB entries, Lenovo Switch Center might not list all the entries (**Monitor > Layer 2 > Bridge > Forwarding Database Information**).

Monitoring Ports in Stacking mode

In a Stacking scenario, the port information or statistics might not all be listed in the initial display. Click **Refresh** to show the complete data.

VMready Across Datacenter Wizard

The **Test** button fails in step 3 (Define VM Management Server) in the following condition:

Problem:

1. Configure VM Management Server.
2. Click the **Test** button and this succeeds if the address is valid and the server is reachable.
3. Click the **Next** or **Prev** button.
4. Return to step 3 (Define VM Management Server) and change the address of a VM Management server (other than the one configured above).
5. Click the **Test** button. This results in failure.

Workaround:

1. Configure VM Management Server.
2. Click the **Test** button and this succeeds if the address is valid and the server is reachable.
3. Click the **Next** or **Prev** button.
4. Return to step 3 (Define VM Management Server) and change the address of a VM Management server (other than the one configured above).
5. Click the **Next** or **Prev** button.
6. Return to step 3 (Define VM Management Server) and click the **Test** button.

The test succeeds.

Switches can't be configured with default switch parameters

Switch's SNMP agent does not allow the creation of switch parameters with default values. So, if you try to configure feature/parameters on the switch with default values, it is neither shown in Lenovo Switch Center GUI nor gets configured in the switch.

Statistics charts: Switch Center plots the graph only if the first data point value is greater than 0.5

The Lenovo Switch Center chart starts plotting the graph only after the data point value becomes greater than 0.5. However, once the chart starts plotting the graph, it is capable of handling data point values that are less than 0.5.

Exporting data to CSV file does not work from Microsoft Internet Explorer configured with IBM Java Runtime Environment

The data is not exported to CSV file when Microsoft Internet Explorer, configured with IBM's Java Runtime Environment (JRE) plug-in, is used. However, the export does work if another JRE plug-in (for example, the one from Sun/Oracle) is used. The workaround is to use either Microsoft Internet Explorer configured with Sun/Oracle JRE, or Mozilla Firefox.

Statistics charts are not printed correctly while using Mozilla Firefox

The switch statistics charts are not printed correctly from Mozilla Firefox. The workaround is to use either Microsoft Internet Explorer or to take the screen capture and print it using any image editor.

Cannot set LDAP primary server to default address 0.0.0.0

Switch's SNMP agent does not allow setting LDAP primary server address to the default value 0.0.0.0. The workaround is to use either the target switch's Command Line Interface (CLI) or Browser Based Interface for setting the default address for LDAP primary server.

Incorrect MAC address displayed

Switch's SNMP agent returns an incorrect MAC address, if the configured MAC address' octets contain repeated values. For example, 22:22:22:22:22:22, 33:33:33:33:33:33. However, if the MAC address is 11:11:11:11:11:11, it works fine.

Enabling STP mode via Switch Center results in setting it to PVST (applicable to switch firmware versions 6.8 and above)

When STP mode is enabled by the Lenovo Switch Center component, the switch's SNMP agent sets the STP mode to PVST. The workaround is to use either the target switch's Command Line Interface (CLI) or Browser Based Interface for enabling the STP mode.

Cannot configure EXT11 for LLDP Port in Virtual Fabric 10Gb Ethernet Switch Module

IBM Virtual Fabric 10Gb Ethernet Switch Module's SNMP agent does not allow configuration of EXT11 as an LLDP port. The workaround is to use either the target switch's Command Line Interface (CLI) or Browser-Based Interface to configure EXT11 as LLDP port.

USB Copy Issues

- USB copy does not work for copying Syslog and Crashdumps.
- When the transfer status is set to **complete**, any configuration changes submitted results in an error. The workaround is to wait a few seconds to let the transfer status to change to **idle** on the switch.

Issues specific to IBM System Networking Distributed Virtual Switch 5000V v 1.0

The following are the issues related to SNMP agent running on IBM System Networking Distributed Virtual Switch 5000V v1.0:

- Cannot add a MAC ACL with default entries.
- Cannot perform an image backup operation.
- Save operation sometimes fails. But subsequent invocation succeeds.

SNMP Agent issues an error if VLAN is configured for vNIC group

Switch's SNMP agent issue an error while creating a vNIC group entry configured with a VLAN. The SNMP Agent creates a vNIC group entry without a VLAN.

Sync Config does not work for IBM Flex switches

Sync Config functionality does not work for IBM Flex System 10Gb Virtual Fabric Scalable Switch and IBM Flex System 1Gb Ethernet Scalable Switch.

Incorrect port mapping for some switches running with 7.2 firmware

Switch's SNMP agent returns incorrect port mapping for the following switches running with 7.2 firmware:

- RackSwitch G8264
- RackSwitch G8316
- IBM Flex System 10Gb Virtual Fabric Scalable Switch

SNMP agent returns 1 bit higher for the ports above 63, that is, for port 63, 64th bit is set in the bitmap; for 64, the 65th bit is set and so on. This issue affects the following operations for the above switch versions:

- **Device > Configure > Layer 2 > Virtual LANs > VLAN Memberships**
- **Device > Sync Config**

Configuration errors when the boot profile is set to `ipmc-opt` in IBM switches

In some IBM switches, when the boot profile is set to `ipmc-opt`, many configuration functions are disabled. When this boot profile is active on the switch, management of these disabled features in Lenovo Switch Center results in an error condition.

Cannot set OSPF Areas 3-5 for RackSwitches

RackSwitch's SNMP agent does not allow setting OSPF Areas with an area index of 3, 4 and 5. The workaround is to use either the target switch's Command Line Interface (CLI) or Browser-Based Interface for that operation.

Invalid configurations

SNMP agents on some supported switches might allow following invalid configurations without reporting an error:

- Configure 10Gbs (10000mbs) speed for a 1G port.
- Configure port Edge, Link Type and Guard Type for management ports.
- Add a static multicast router to a port in VLAN, which is not configured for Snooping.
- Enable flow control for a port when its mode is set to half-duplex.
- Enable Multicast, Broadcast and DLF Threshold for Threshold Rate results in setting their value to 0, instead of the default value of 100Mbps.
- Configure the management VLAN (4095) for ACL's Ethernet.

Stacked Rackswitch G8264 7.4.1 – Cannot create a trunk using ports on non-existent member switches

Ports in detached members of stacked RackSwitch G8264 7.4 switches are shown incorrectly in the Device Console, under the Trunk Group Ports tab in **Monitor > Switch Menu**. Ports on the master switch are shown correctly.

The workaround is to use either the target switch's Command Line Interface (CLI) or Browser-Based Interface for that operation.

Stacked Rackswitch G8264 – Cannot create a failover trigger when stacked

Ports are shown incorrectly when creating a failover trigger group on stacked RackSwitch G8264 7.4 switches.

The workaround is to use either the target switch's Command Line Interface (CLI) or Browser-Based Interface for that operation.

EN4093R – Virtual Ports field in Configure > L2 > VLAN > VLAN Membership tab doesn't work in the Device Console

The device SNMP agent doesn't list virtual ports in VLANs.

The workaround is to use either the target switch's Command Line Interface (CLI) or Browser-Based Interface for that operation.

CN4093 with Upgrade 1 (46 ports) – Invalid ports are shown in Configure > Ports > WRED/ECN tab of the Device Console

The workaround is to use either the target switch's Command Line Interface (CLI) or Browser-Based Interface for that operation.

